

EZLINK PORTABLE MACHINE TOOLS



PIPE

**Cutting
Beveling**

Prep

SOLUTIONS

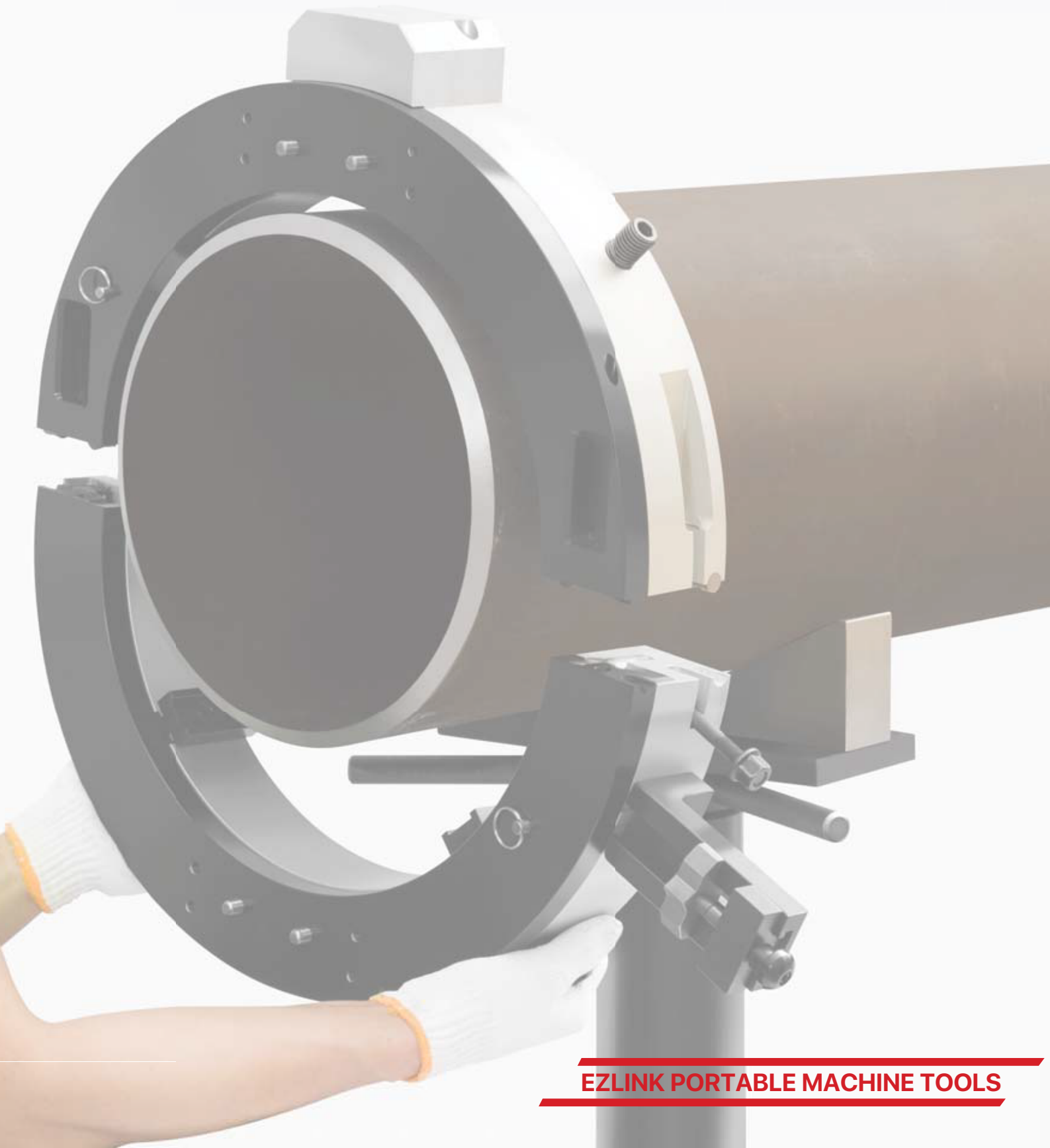


EZLINK PORTABLE MACHINE TOOLS

Add: Xinxiang Town Industry Zone, Huanghe Road, Weibin District, Xinxiang City, Henan, China
Tel: +86-17737350726 · E-mail: info@elineboringmachine.com · www.elineboringmachine.com



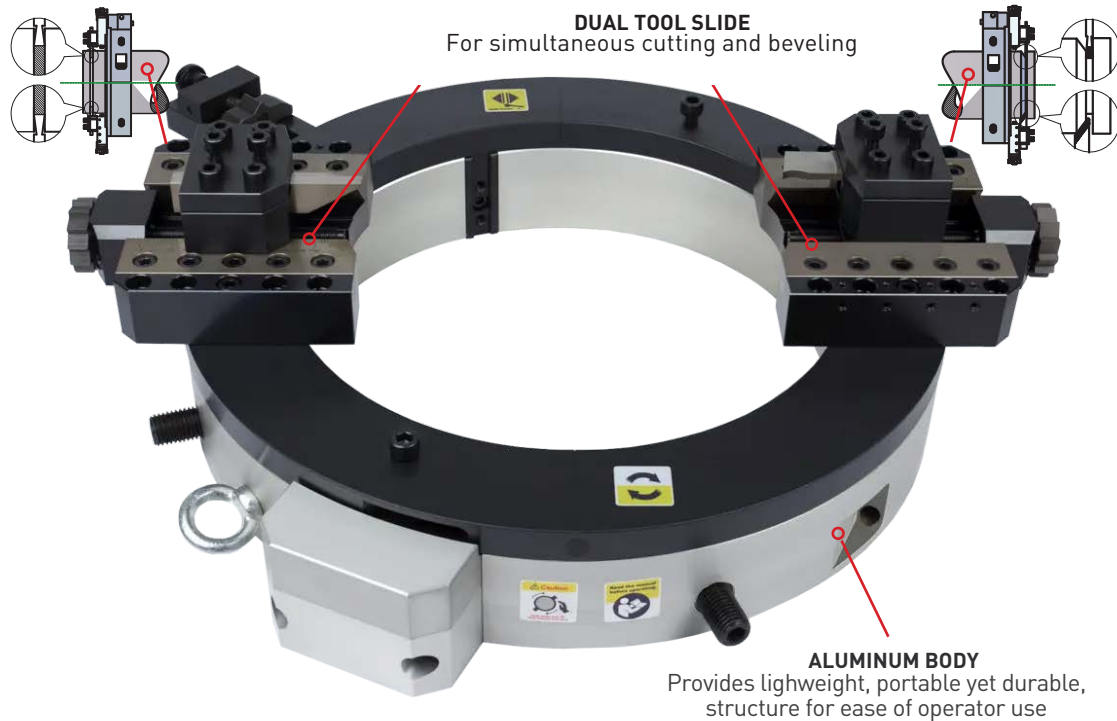
PRODUCT CATALOGUE



EZLINK PORTABLE MACHINE TOOLS

Clamshell Cold Cutter & Beveler

Pipe Cutting /Beveling Machines



Steel Body

Both Rotary ring and Stationary ring made by steel. little heavier, But rigidity is very good, idea for heavy walled pipe.



Aluminum Body

Stationary ring made by aluminum. Using steel material where strength is needed, aluminum material where strength is less critical than weight. Lightweight makes more convenient for operator.

Clamshell Cold Cutter & Beveler

Features

SPLITE FRAME

- Allows for quick mounting and dismounting on in-line pipe

COLD CUTTING AND BEVELING

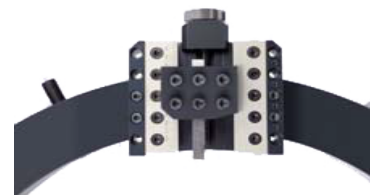
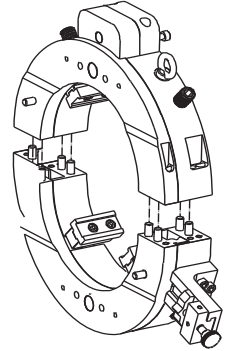
- Cutting and beveling with a torch not only requires additional grinding, but may cause an undesirable heat affected zone
- Reduces safety issues associated with traditional cutting/ beveling methods

LOW AXIAL /RADIAL CLEARANCE

- Provides easier access between pipes
- Allows for severing and beveling of short pipe sections

AUTOMATIC TOOL FEED

- Simplifies operator use, while maintaining precise bevels
- Eliminates need for skilled operator



Accessories



STANDARD TOOL SLIDE

For cutting and beveling up to 30mm (1.2") wall thickness



HEAVY WALL TOOL SLIDE

Specially designed for heavy wall applications with unlimited thickness constraints



OD TRACKING TOOL SLIDE

Compensates for ovality by moving the tool us or down with the pipe surface



COUNTERBORE TOOL SLIDE

Used for internal beveling when wall thickness is inconsistent



Clamshell Cold Cutter & Beveler

Drive Types



Pneumatic Motor

- Built in safety with explosion proof design
- Consistent stable performance
- Heavy Duty Planetary Gears
- Used for standard applications

Pneumatic Motor Specifications:

Rotation Speed: 226 RPM
Torque: 117 Nm
Power: 3.77 HP
Tested by Atlas Copco device
@0.6Mpa
compressed air

Metabo Electric Motor

- Consistent stable performance
- Variable Speeds
- Used for heavy wall /large diameter applications

Electric Motor Specifications:

METABO Motor
Model: W24-230MVT
230V- 50/60HZ 2400W 11,0A
N 6600/Min (rpm)
Made in Germany

Hydraulic Motor

- High efficiency, high torque
- Variable Speeds
- Used for heavy wall /large diameter applications

Hydraulic Motor Specifications:

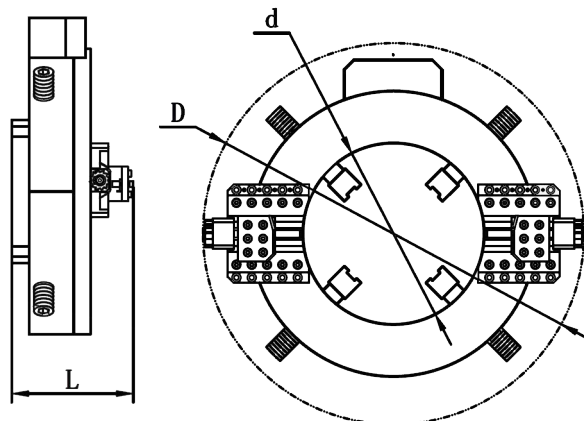
Power Supply: 380-440V 3PH
50/60HZ
2-60L per minute @6-12.5Mpa

Ordering Guide

- Confirm the machine body material: steel body or aluminum body you prefer
- Define Pipe Diameter Range
- Choose Drive type: Pneumatic, electric or hydraulic
- Define beveling angel required
- Confirm Weld joint required (U, V, Double V or Compound preparation)
- Confirm pipe material (Carbon steel, stainless steel or others)
- Confirm pipe wall thickness



Model	Body Material	Working Range	d	D	L	Machine Weight	Shipping Weight	Package Size
CSF6	Steel	2"-6" (50-168mm)	7.3" (185 mm)	20.2" (512mm)	7" (178 mm)	46 kg(101.4 lbs)	72 kg(159 lbs)	28.3*25.2*12" (720*640*290mm)
	Aluminum				7.6" (192 mm)	42 kg (92 lbs)	67.5 kg (149 lbs)	
CSF8	Steel	2"-8" (50-230mm)	9.3" (236mm)	22.2" (564mm)	7"(178 mm)	52 kg (115 lbs)	84.5kg(187 lbs)	28*26.8*12" (710*680*290mm)
	Aluminum				7.6"(192 mm)	42.5 kg (93.5 lbs)	75.5 kg(167 lbs)	
CSF10	Steel	4"-10" (114-275mm)	11.1" (283 mm)	24.1" (612mm)	7"(178 mm)	53.5 kg(118 lbs)	88.5 kg(196 lbs)	28.3*27*12" (710*690*290mm)
	Aluminum				7.6"(192 mm)	44.5 kg (99 lbs)	79.5 kg (176 lbs)	
CSF12	Steel	6"-12" (168-325mm)	13.1" (334 mm)	26.2" (665 mm)	7"(178 mm)	62kg (137 lbs)	97 kg(214 lbs)	31.5*30*12" (800*740*290mm)
	Aluminum				7.6"(192 mm)	53 kg (117 lbs)	88kg(194 lbs)	
CSF14	Steel	8"-14" (219-377mm)	15.2" (386 mm)	28.3" (719mm)	7"(178 mm)	68 kg(150 lbs)	106 kg(234 lbs)	33*31*12" (840*780*290mm)
	Aluminum				7.6"(192 mm)	56 kg (124 lbs)	94kg(207 lbs)	
CSF16	Steel	10"-16" (273-426mm)	17.2" (438 mm)	30.6" (776 mm)	7.1"(180 mm)	76kg (168 lbs)	116 kg(256 lbs)	35*29*12" (890*720*290mm)
	Aluminum				7.7"(195 mm)	60 kg (132 lbs)	100kg(220 lbs)	
CSF18	Steel	12"-18" (300-457mm)	18.5" (469 mm)	31.8" (807 mm)	7.1"(180 mm)	79 kg(174 lbs)	120 kg(265 lbs)	36*34*12" (920*870*290mm)
	Aluminum				7.7"(195 mm)	65.5kg (145 lbs)	106.5kg(235 lbs)	
CSF20	Steel	14"-20" (355-508mm)	20.4" (519 mm)	33.9" (862mm)	7.5"(190 mm)	98kg (216 lbs)	143 kg(316 lbs)	38.9*32.2*12.6" (990*820*320mm)
	Aluminum				7.7"(195 mm)	77 kg (170 lbs)	122kg(269 lbs)	
CSF22	Steel	16"-22" (400-560mm)	22.4" (570 mm)	35.8" (910mm)	7.5"(190 mm)	104 kg(230 lbs)	152 kg(336 lbs)	38.9*36*13.4" (990*920*340mm)
	Aluminum				7.7"(195 mm)	79 kg (174 lbs)	127kg(280 lbs)	
CSF24	Steel	18"-24" (457-610mm)	24.3" (618 mm)	37.8" (960 mm)	7.5"(190 mm)	112kg (247 lbs)	161 kg(355 lbs)	41*36*12" (1050*920*290mm)
	Aluminum				7.7"(195 mm)	85 kg (187 lbs)	134kg(296 lbs)	
CSF26	Steel	20"-26" (508-660mm)	26.4" (670 mm)	40.2" (1020 mm)	7.5"(190 mm)	126 kg(278 lbs)	180 kg(397 lbs)	41*41*13" (1050*1050*330mm)
	Aluminum				7.7"(195 mm)	96 kg (212 lbs)	150 kg(331 lbs)	
CSF28	Steel	22"-28" (550-715mm)	28.3" (719 mm)	42.7" (1084 mm)	7.5"(190 mm)	148.5kg (327 lbs)	203.5 kg(449 lbs)	41*41*13.4" (1050*1050*340mm)
	Aluminum				7.8"(198 mm)	114 kg (251 lbs)	169kg(373 lbs)	
CSF30	Steel	24"-30" (600-762mm)	30.3" (770 mm)	44.6" (1134 mm)	7.5"(190 mm)	152.5 kg(336 lbs)	208.5 kg(460 lbs)	42.9*42.9*13.4" (1090*1090*340mm)
	Aluminum				7.8"(198 mm)	116 kg (256 lbs)	172kg(380 lbs)	
CSF32	Steel	26"-32" (660-813mm)	32.7" (830 mm)	47" (1194 mm)	7.6"(192 mm)	163kg (359 lbs)	224 kg(494 lbs)	45.3*45.3*13.4" (1150*1150*340mm)
	Aluminum				8.1"(207 mm)	120.5kg (266 lbs)	181.5kg(400 lbs)	
CSF36	Steel	30"-36" (762-914mm)	36.4" (924 mm)	51" (1296 mm)	8.35"(212 mm)	191 kg(421 lbs)	256 kg(565 lbs)	49.2*49.2*14.9" (1250*1250*380mm)
	Aluminum				8.4"(214 mm)	144.5 kg (319 lbs)	209.5 kg(319 lbs)	
CSF42	Steel	36"-42" (914-1066mm)	42.4" (1077mm)	57.8" (1468 mm)	8.35"(212 mm)	271kg (597 lbs)	355kg(783 lbs)	56.3*31.9*14.9"*2 (1430*810*380mm*2)
	Aluminum				8.5"(216 mm)	197.5kg (435 lbs)	281kg(620 lbs)	
CSF48	Steel	42"-48" (1066-1230mm)	49.1" (1248 mm)	64.8" (1646mm)	8.35"(212 mm)	358kg(790 lbs)	461 kg(1016 lbs)	33*31*12"*2 (1640*910*380mm*2)
	Aluminum				8.5"(216 mm)	244kg(536.8 lbs)	347kg(763.4bs)	





CONTACT

EZLINK PORTABLE MACHINE TOOLS

Add: Xinxiang Town Industry Zone, Huanghe Road,
Weibin District, Xinxiang City, Henan, China

Tel: +86-17737350726

WWW.ELINEBORINGMACHINE.COM

Split Frame Cold Cutter & Beveler

FOR

2" TO 48"
DIAMETER PIPES



EZLINK PORTABLE MACHINE TOOLS

